


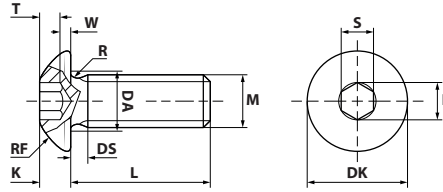



TORNILLO ISO 7380-1 10.9 / DIN 34805-1 CINCADO

 HEXAGON SOCKET PANHEAD SCREW ISO 7380 10.9 ZINC PLATED
 VIS FILETAGE MÉTRIQUE TÊTE BOMBÉE À SIX PANS CREUX ISO 7380 10.9 EN ACIER ZINGUÉ
 RUNDKOPFSCHRAUBE MIT INNENSECHSKANT ISO 7380 10.9 - VERZINKT



CAJA / BOX / BOÎTE 




CÓDIGO / Code / Code: **7380Z**

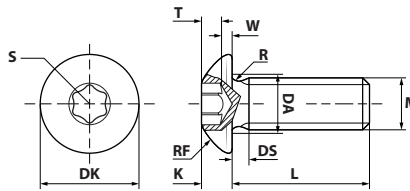
CINCADO / ZINC PLATED


UNIDADES X CAJA / Units x box / Unités x boîte

MxL (m.m.)	M4	M5	M6	M8	M10
8	500	500	500		
10	500	500	500	200	
12	500	500	500	200	
16	500	500	500	200	200
20	500	500	500	200	200
25		500	500	200	200
30			500	200	200
35			200	200	100
40				200	100
45				200	100
50				200	100
60				200	100
MEDIDAS / Measures / Mesures					
Paso / Pitch	0,70	0,80	1,00	1,25	1,50
DS max.	2,10	2,40	3,00	3,75	4,50
DA max.	4,70	5,70	6,80	9,20	11,20
DK max.	7,60	9,50	10,50	14,00	17,50
DK min.	7,24	9,14	10,07	13,57	17,07
E min.	2,87	3,44	4,58	5,72	6,86
K max.	2,20	2,75	3,30	4,40	5,50
K min.	1,95	2,50	3,00	4,10	5,20
R min.	0,40	0,45	0,50	0,70	0,70
RF max.	4,60	5,75	6,15	7,95	9,80
RF min.	4,20	5,25	5,65	7,45	9,20
S (Allen)	2,5	3	4	5	6
T max.	1,65	2,12	2,56	3,05	3,75
T min.	1,30	1,56	2,08	2,60	3,12
W min.	0,30	0,38	0,74	1,05	1,45

TORNILLO ISO 7380-1 / DIN 34805-1 TX CINCADO

 6-LOBE RECESS PANHEAD SCREW ISO 7380 ZINC PLATED
 VIS FILETAGE MÉTRIQUE TÊTE BOMBÉE TX ISO 7380 EN ACIER ZINGUÉ
 RUNDKOPFSCHRAUBE MIT INNENSECHSRUND ISO 7380 - VERZINKT



CAJA / BOX / BOÎTE 

CÓDIGO / Code / Code: **7380TZ**

CINCADO / ZINC PLATED

UNIDADES X CAJA / Units x box / Unités x boîte

MxL (m.m.)	M5	M6	M8
10	500	500	
16	500	500	200
20	500	500	200
25	500	500	200
30	500	200	200
MEDIDAS / Measures / Mesures			
Paso / Pitch	0,80	1,00	1,25
DS max.	2,40	3,00	3,75
DA max.	5,70	6,80	9,20
DK max.	9,50	10,50	14,00
DK min.	9,14	10,07	13,57
K max.	2,75	3,30	4,40
K min.	2,50	3,00	4,10
R min.	0,45	0,50	0,70
RF max.	5,75	6,15	7,95
RF min.	5,25	5,65	7,45
S (TX)	T-25	T-30	T-40
T max.	1,90	2,10	2,50
T min.	1,50	1,60	2,00
W min.	0,38	0,74	1,05